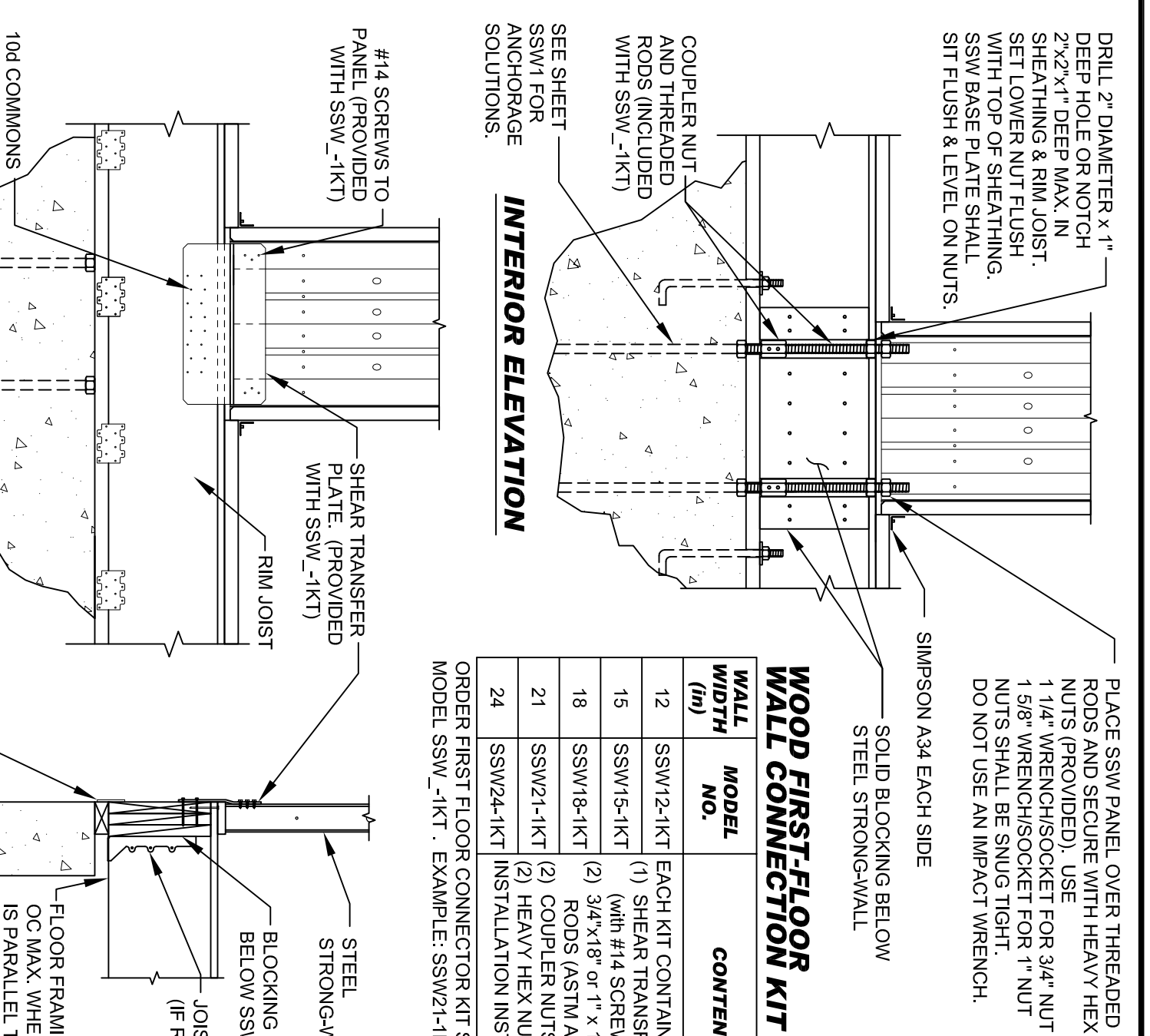
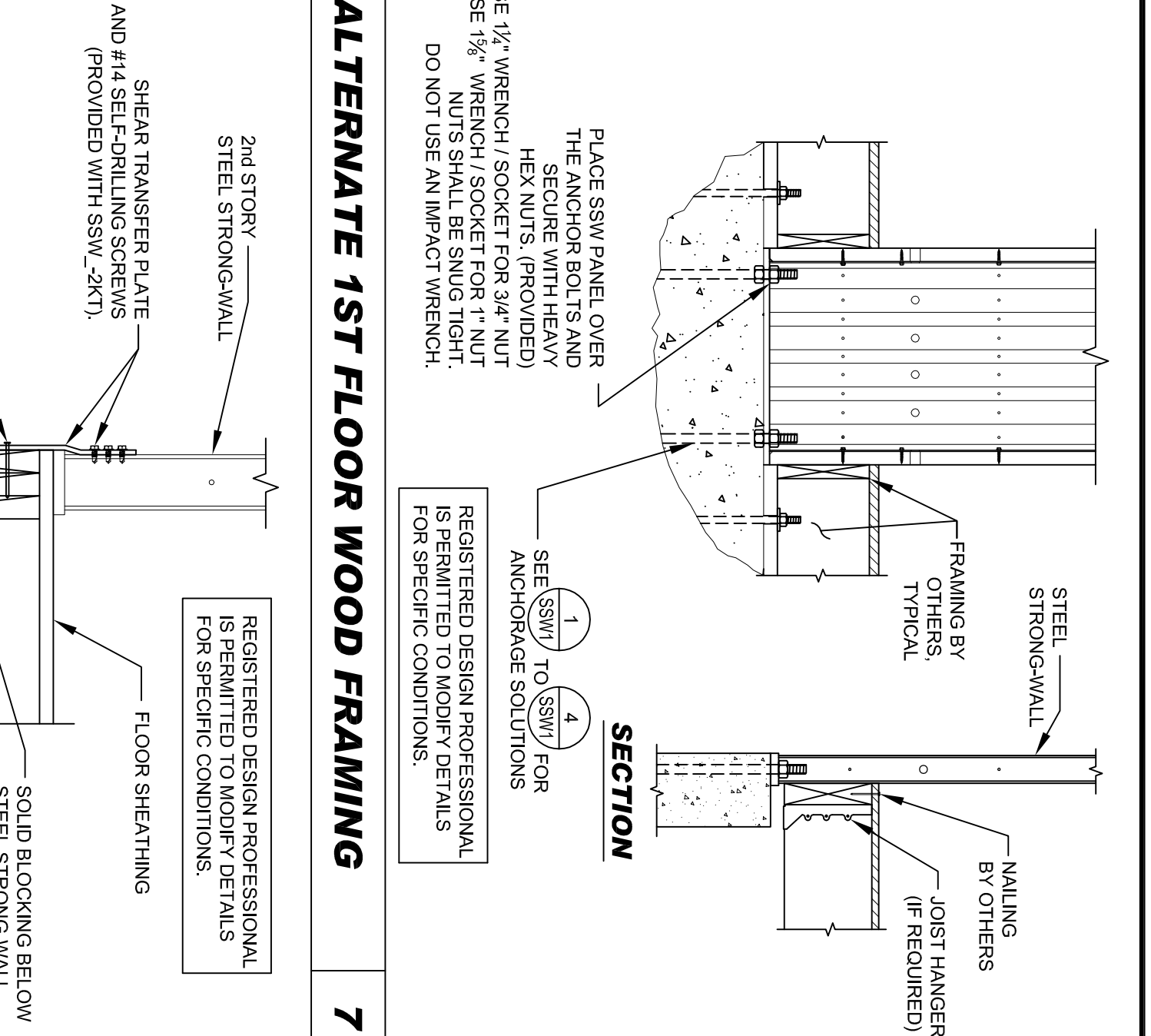
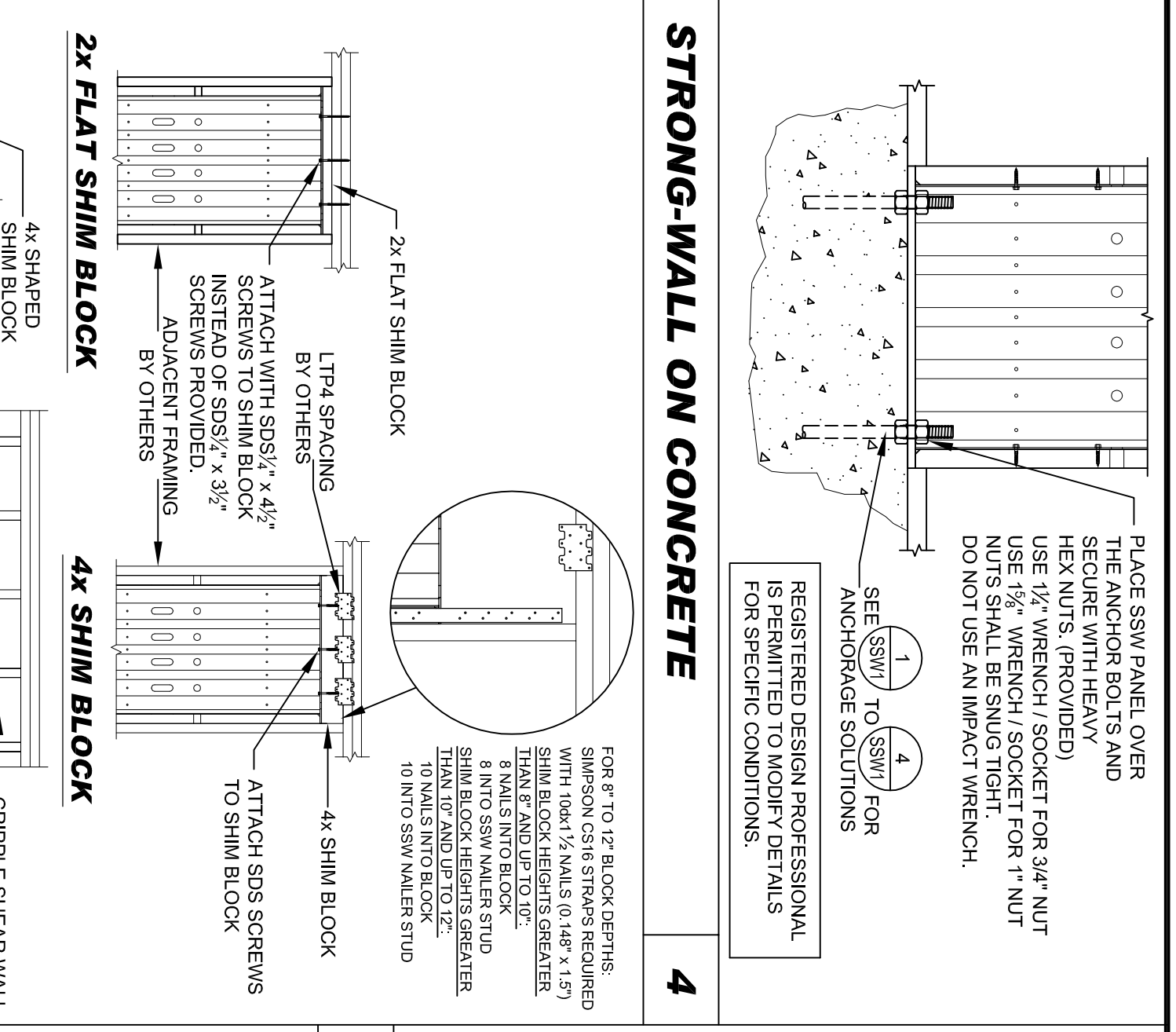


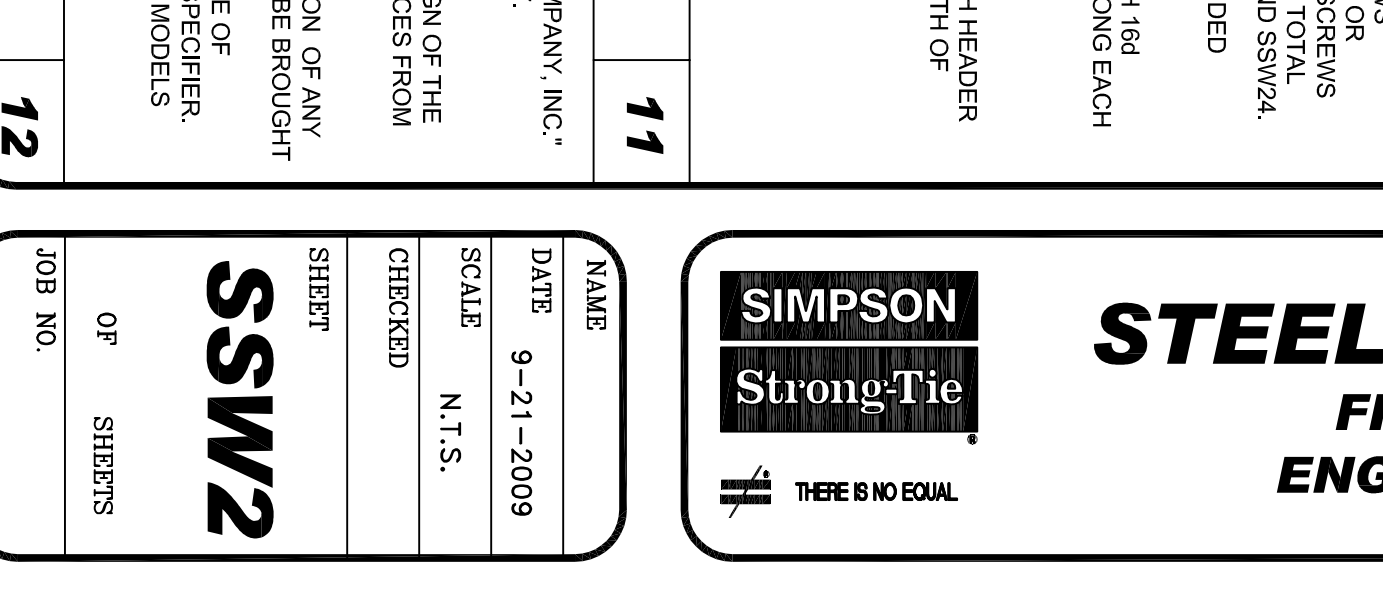
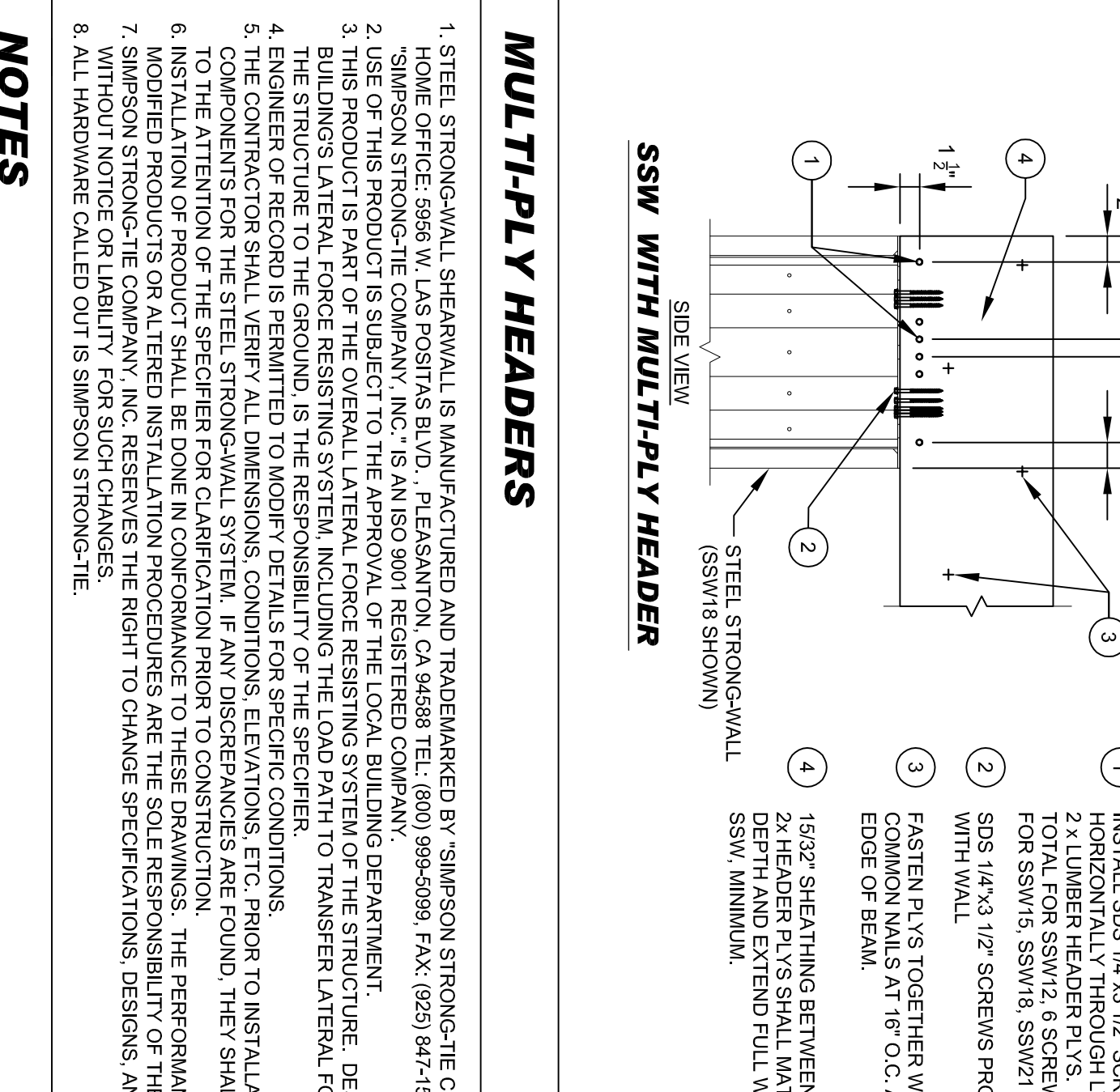
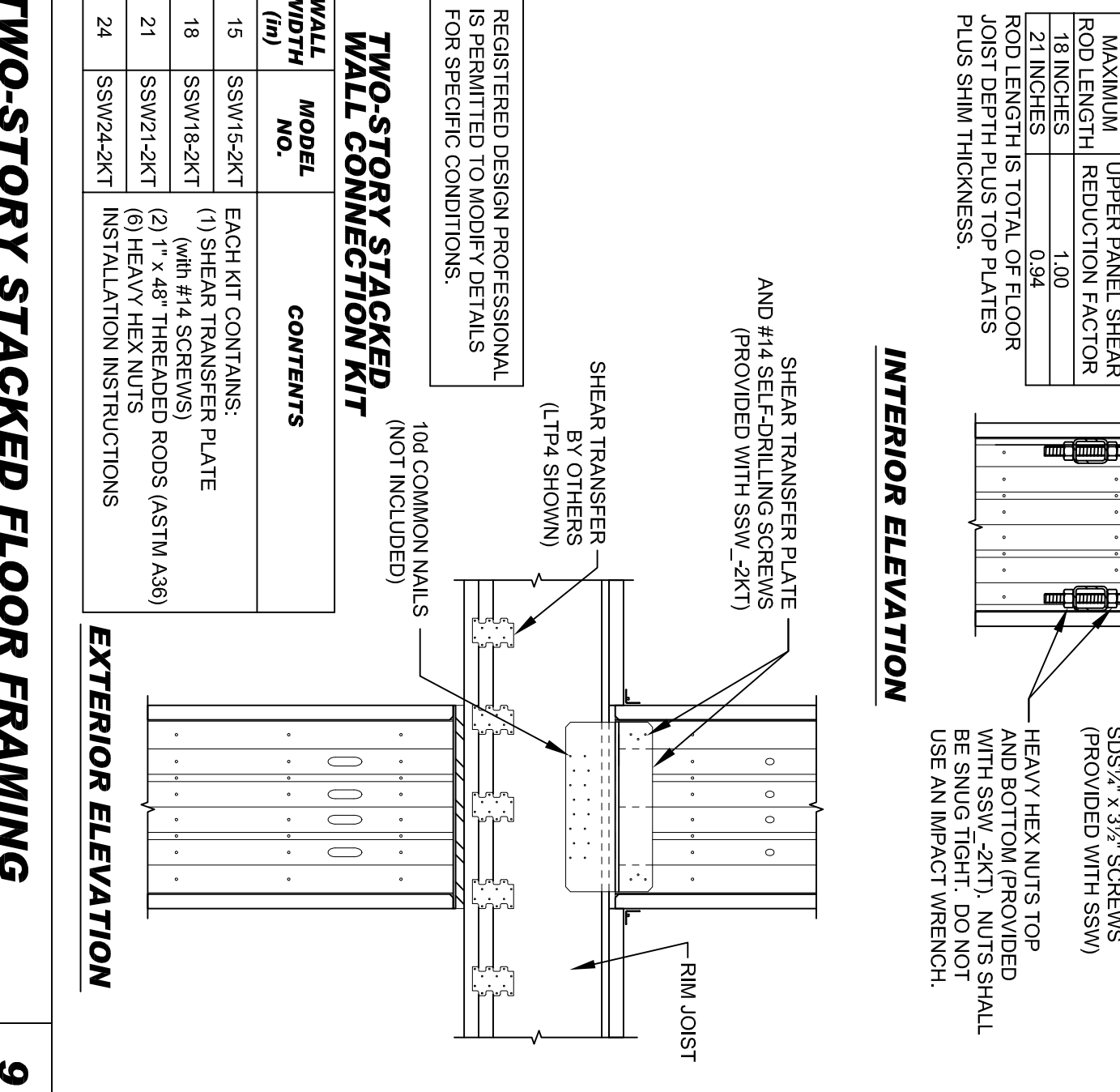
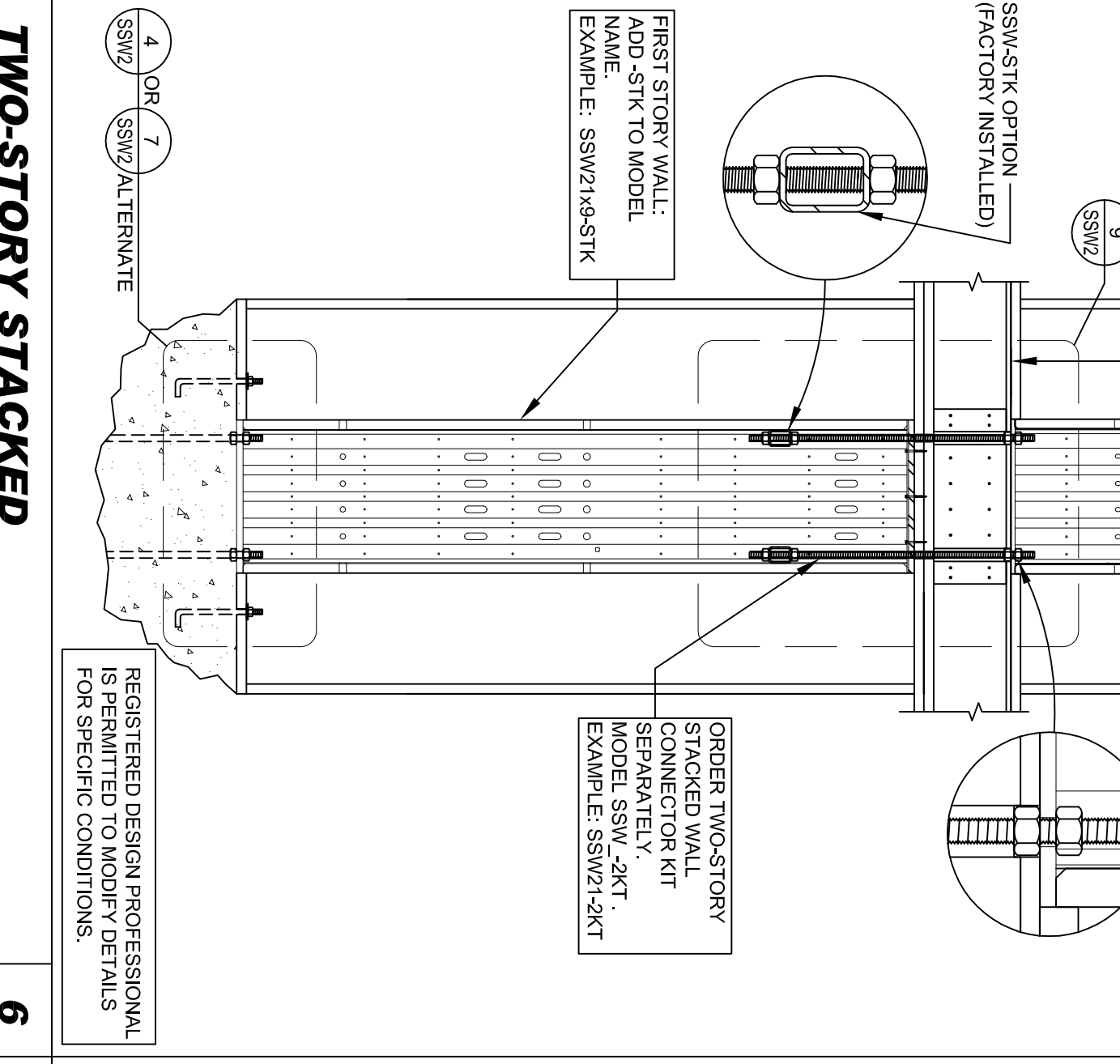
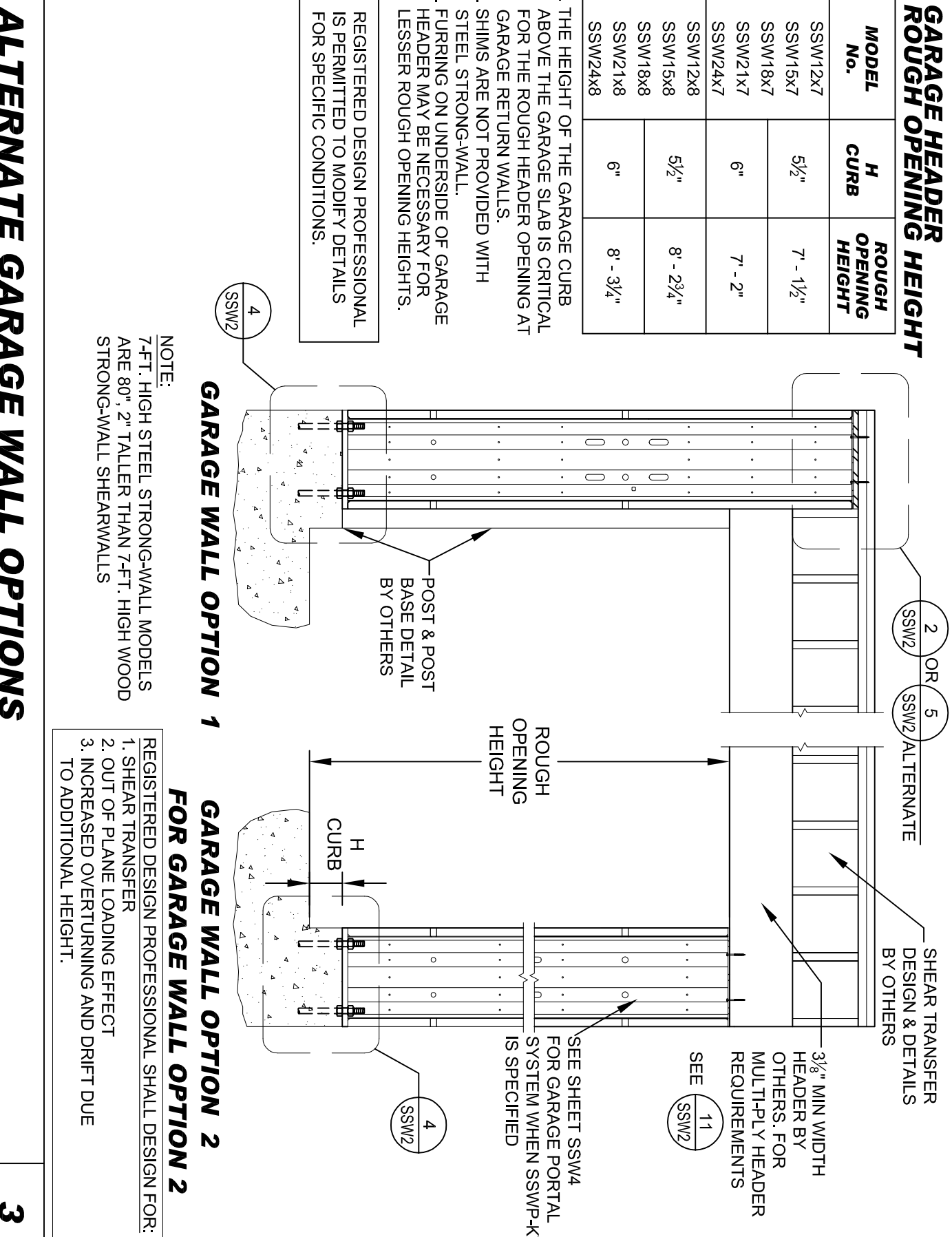
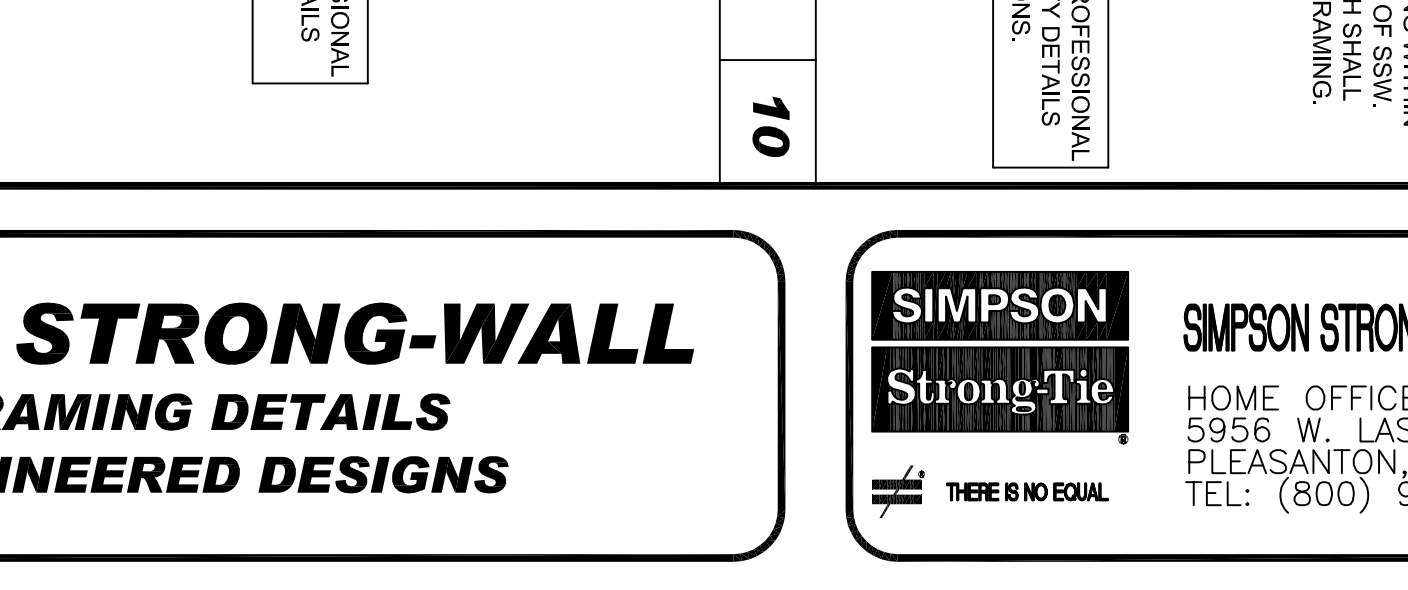
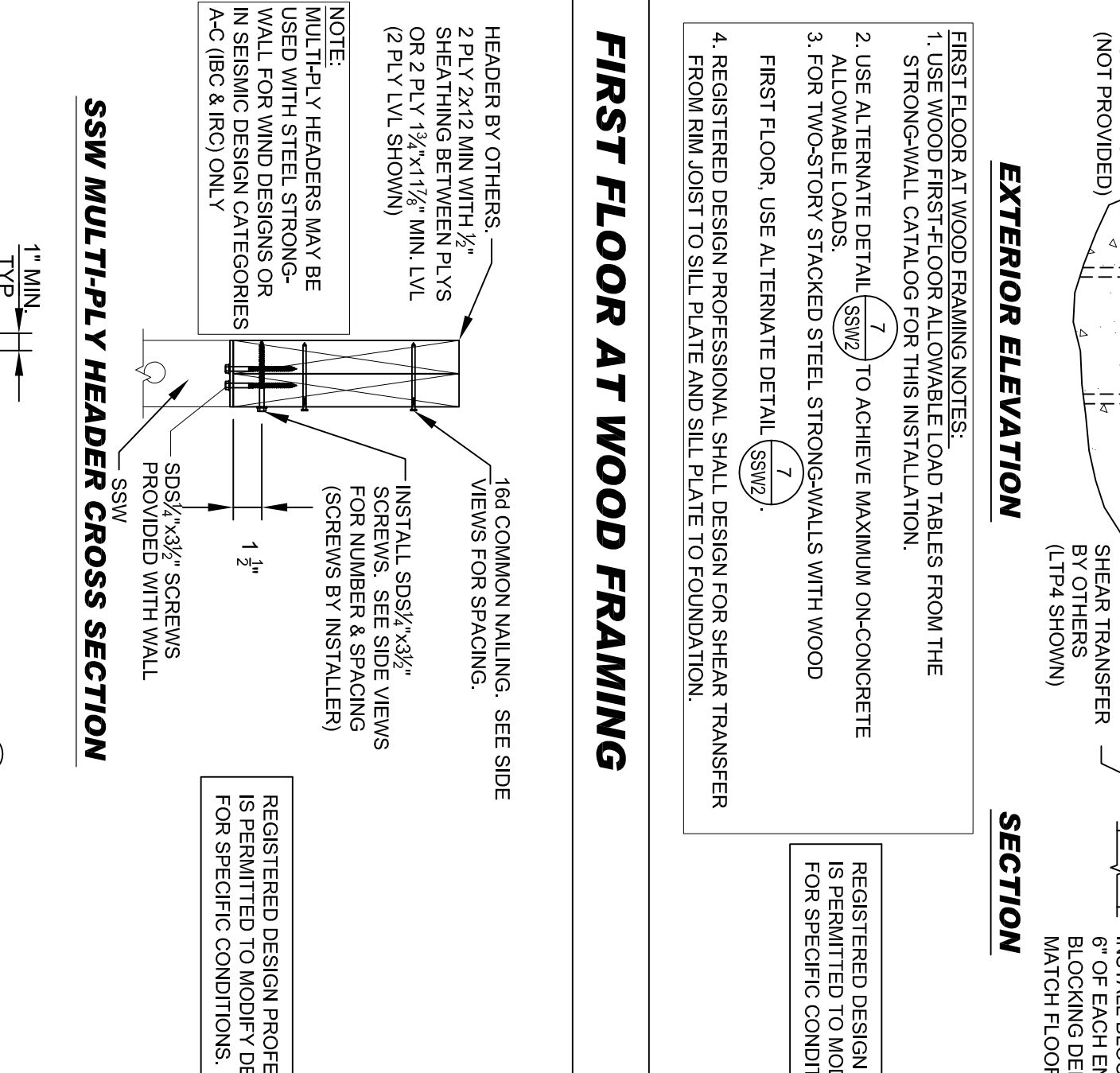
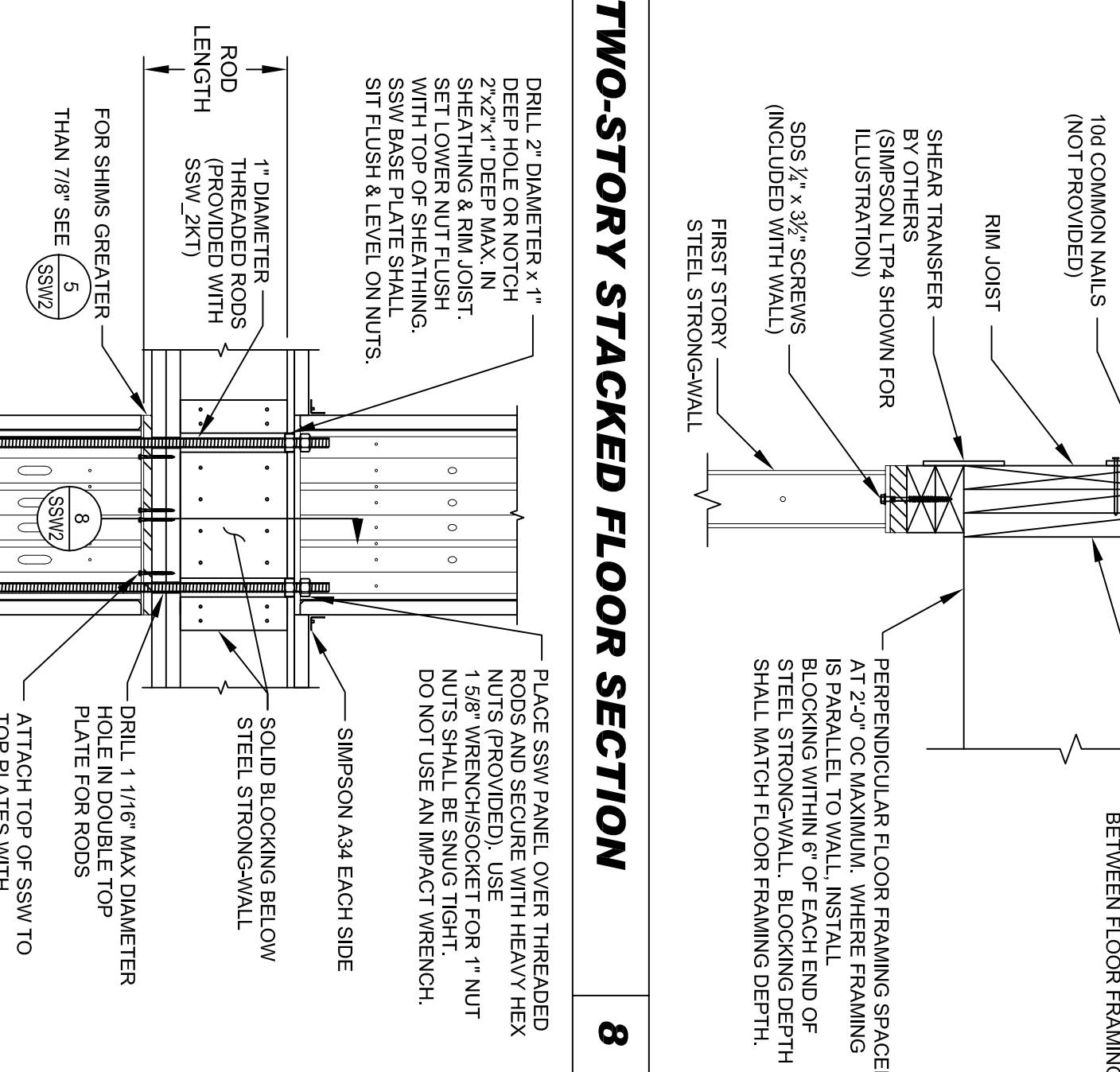
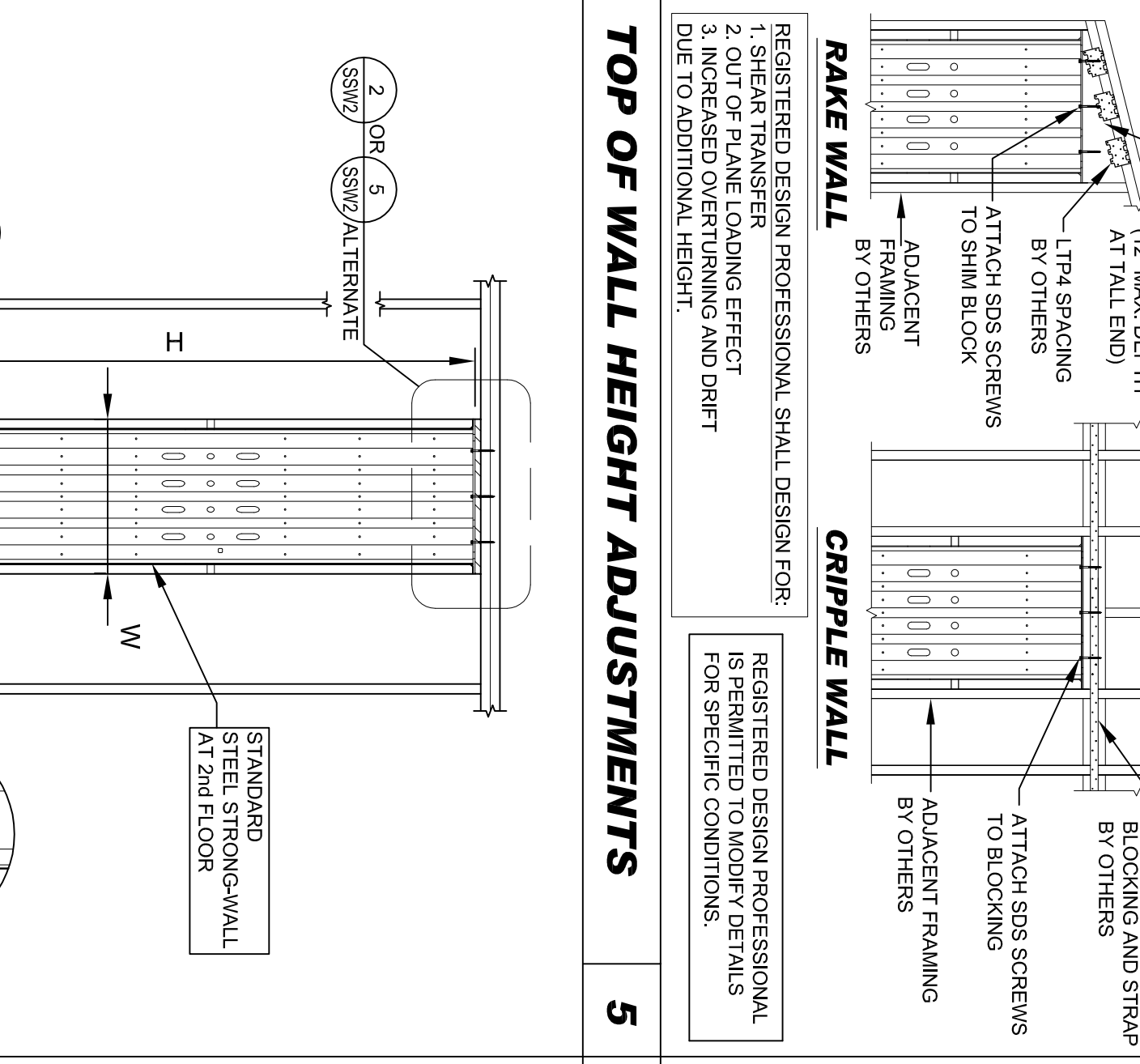
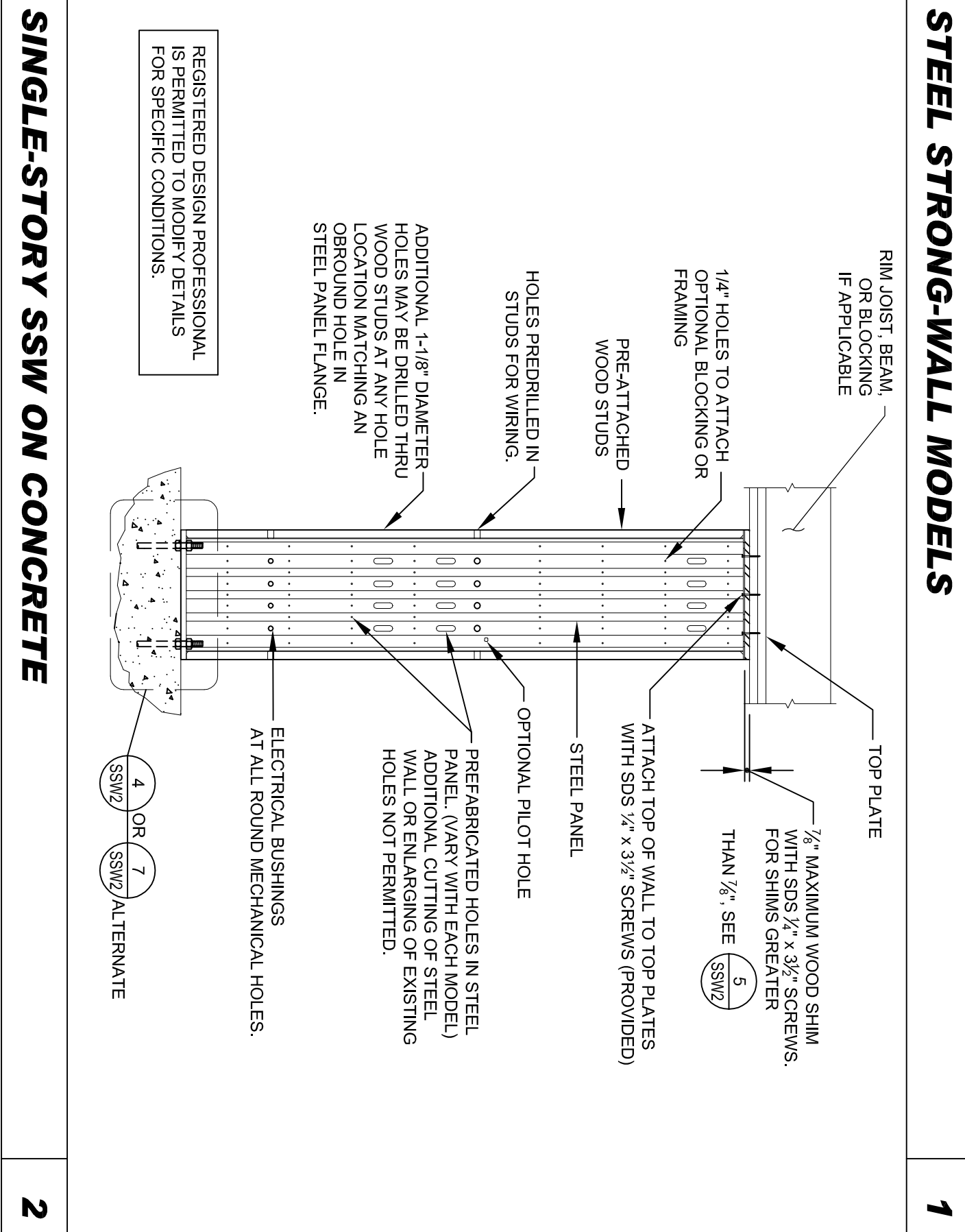
STEEL STRONG-WALL MODELS

STD. WALL MODEL NO.	STK. WALL MODEL NO.	H (in)	T (in)	HOLDOWN ANCHOR BOLTS	QTY. OF TOP OF WALL SCREWS
SSW12A7	---	80	3/12	(2) 3/4"	4
SSW15A7	---	80	3/12	(2) 1"	6
SSW18A7	---	80	3/12	(2) 1 1/8"	9
SSW21A7	---	80	3/12	(2) 1 1/2"	12
SSW24A7	---	80	3/12	(2) 1 3/4"	14
SSW12A8	---	88 1/2	3/12	(2) 3/4"	4
SSW15A8	---	88 1/2	3/12	(2) 1"	6
SSW18A8	---	88 1/2	3/12	(2) 1 1/8"	9
SSW21A8	---	88 1/2	3/12	(2) 1 1/2"	12
SSW24A8	---	88 1/2	3/12	(2) 1 3/4"	14
SSW12A9	---	96 1/4	3/12	(2) 3/4"	4
SSW15A9	---	96 1/4	3/12	(2) 1"	6
SSW18A9	---	96 1/4	3/12	(2) 1 1/8"	9
SSW21A9	---	96 1/4	3/12	(2) 1 1/2"	12
SSW24A9	---	96 1/4	3/12	(2) 1 3/4"	14
SSW12A10	---	117 1/4	3/12	(2) 1"	6
SSW15A10	---	117 1/4	3/12	(2) 1 1/8"	9
SSW18A10	---	117 1/4	3/12	(2) 1 1/2"	12
SSW21A10	---	117 1/4	3/12	(2) 1 3/4"	14
SSW24A10	---	117 1/4	3/12	(2) 1 3/4"	14
SSW12A11	---	129 1/4	3/12	(2) 1 1/8"	9
SSW15A11	---	129 1/4	3/12	(2) 1 1/2"	12
SSW18A11	---	129 1/4	3/12	(2) 1 3/4"	14
SSW21A11	---	129 1/4	3/12	(2) 1 3/4"	14
SSW24A11	---	129 1/4	3/12	(2) 1 3/4"	14
SSW12A12	---	141 1/4	3/12	(2) 1 1/8"	9
SSW15A12	---	141 1/4	3/12	(2) 1 1/2"	12
SSW18A12	---	141 1/4	3/12	(2) 1 3/4"	14
SSW21A12	---	141 1/4	3/12	(2) 1 3/4"	14
SSW24A12	---	141 1/4	3/12	(2) 1 3/4"	14
SSW12A13	---	153 1/4	3/12	(2) 1 1/8"	9
SSW15A13	---	153 1/4	3/12	(2) 1 1/2"	12
SSW18A13	---	153 1/4	3/12	(2) 1 3/4"	14
SSW21A13	---	153 1/4	3/12	(2) 1 3/4"	14
SSW24A13	---	153 1/4	3/12	(2) 1 3/4"	14



WOOD FIRST-FLOOR KIT WALL CONNECTION KIT

WALL WIDTH (in)	MODEL	CONTENTS
12	SSW12-KIT	EACH KIT CONTAINS: (1) SHEAR TRANSFER PLATE (WITH #14 SCREWS)
15	SSW15-KIT	(2) 3/4\"/>
18	SSW18-KIT	(2) HEAVY HEX NUTS
21	SSW21-KIT	(2) HEAVY HEX NUTS
24	SSW24-KIT	INSTALLATION INSTRUCTIONS



NO.	DATE	REVISIONS
1	9/21/2009	2006 IBC REVISIONS

STEEL STRONG-WALL
FRAMING DETAILS
ENGINEERED DESIGNS

SIMPSON Strong-Tie
THERE IS NO EQUAL

SIMPSON Strong-Tie
THERE IS NO EQUAL

SIMPSON STRONG-TIE COMPANY, INC.
HOME OFFICE:
5956 W. LAS POSITAS BLVD.
PLEASANTON, CA 94588
TEL: (800) 999-5099

NAME	DATE
SSW2	9-21-2009

SCALE	CHECKED	SHEET	NO. OF SHEETS
N.T.S.		SSW2	